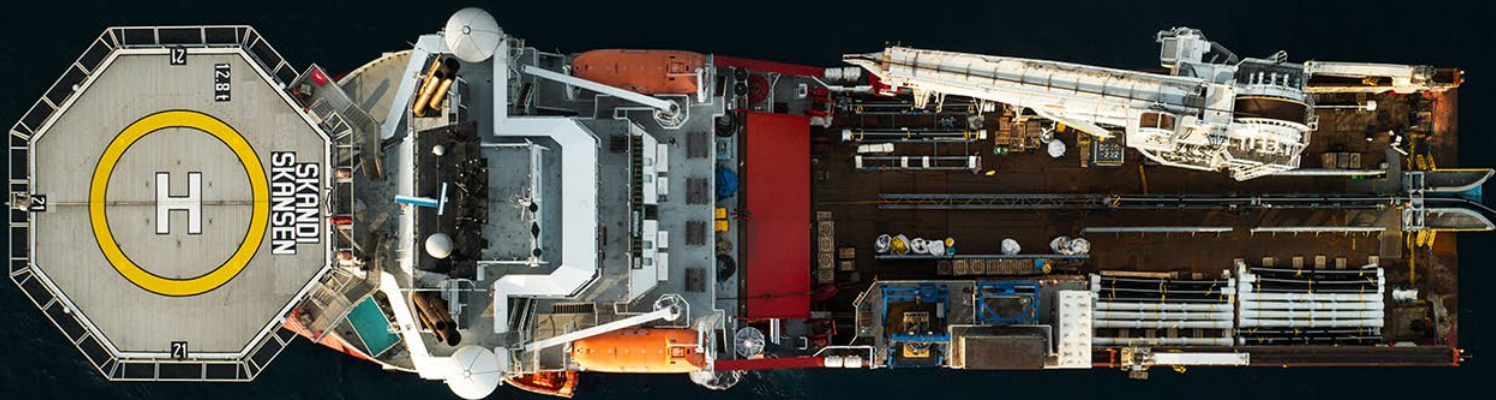




Baleine II – Skansen and family delivers the full package

MOP 2025



# DOF at a Glance



An integrated offshore services company  
combining asset ownership  
and project engineering



**57+22+1**  
vessels in fleet



**6**  
operating continents



**40+ years**  
operational history



**USD 1.94bn**  
backlog as of Q1'24



**>5,200**  
employees



**Norway**  
headquartered



As of Q1'24

# A trusted partner for offshore operations

## Positioned globally \*

- Operating from 6 continents
- 20 offices near key offshore energy markets
- 77 vessels (12 on management / chartered in)
- Head office in Norway

## Total of +5,400 employees \*

## Vessels & subsea equipment \*

▪ Subsea	38
▪ AHTS	29
▪ PSV	9
▪ <b>Total fleet</b>	<b>77</b>
▪ ROV / AUV	74

\* All totals as of 31.12.2024.

***“No matter where DOF operates in the world, safety is held as the highest priority.”***

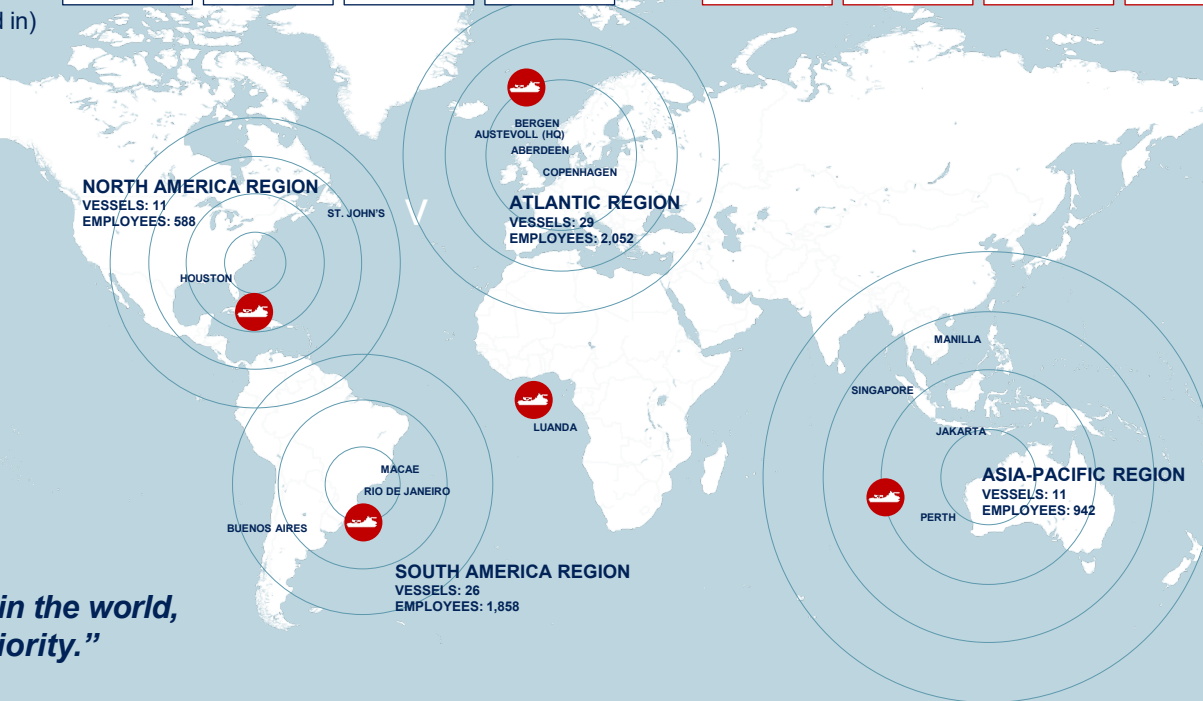
### Subsea services

Integrated subsea services; wherever, whenever you need them.



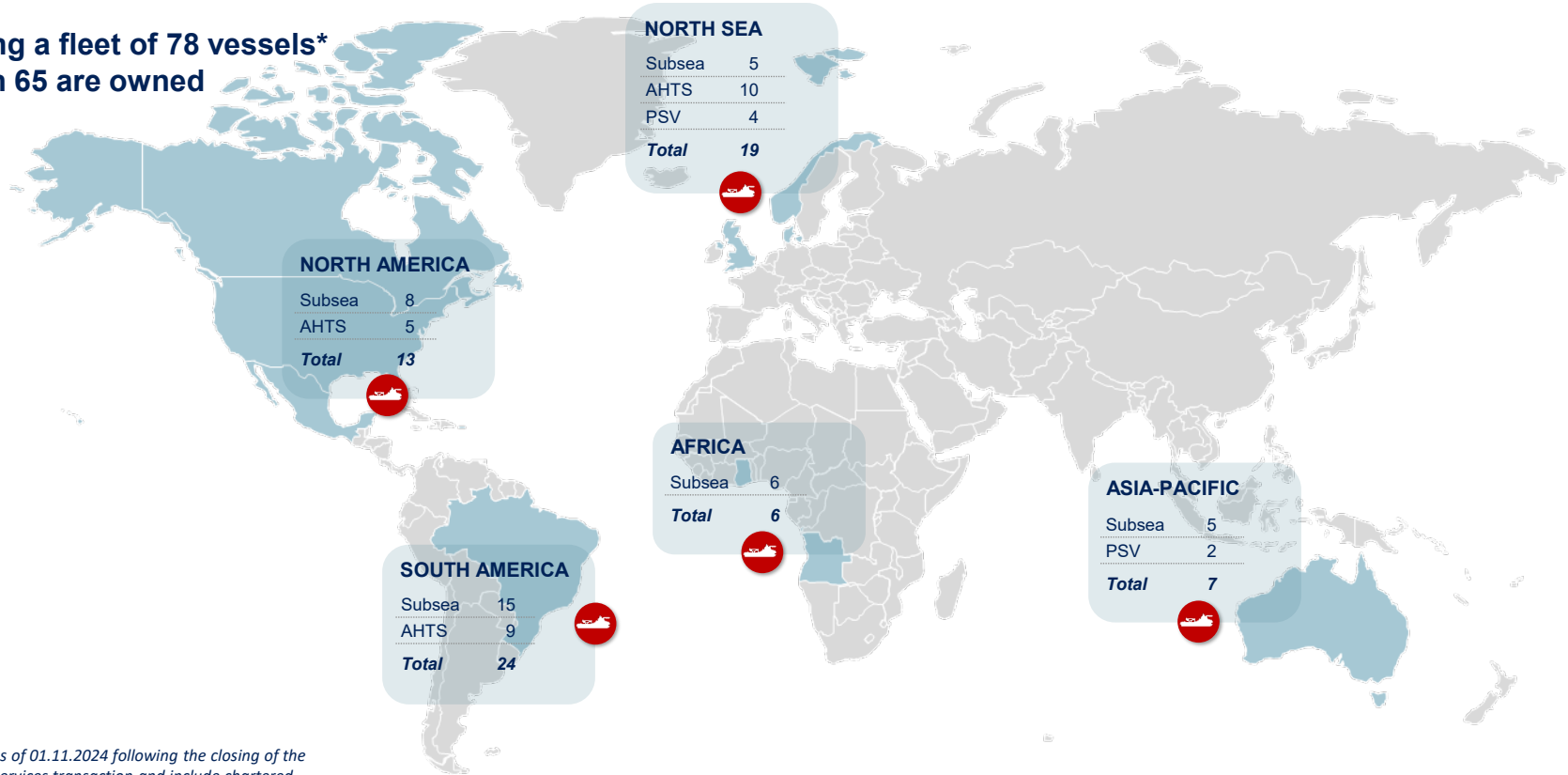
### Marine services

Bringing award-winning capability to the offshore sector.



# A fleet of high-quality & modern vessels

Operating a fleet of 78 vessels\*  
of which 65 are owned



\* All totals are as of 01.11.2024 following the closing of the Maersk Supply Services transaction and include chartered-in vessels, excluding vessels on management.





# Baleine II at a Glance



## Phase 1 Mooring line pre lay

- Pre-survey of mooring lines laying corridors and anchor installation area.
- Pre-installation of mooring system for FPSO.
- Pre-installation of mooring system for and FSO.
- As-laid survey of mooring lines (performed at the same time as the mooring lines are pre-laid)

## Phase 2 Hook up of FPSO and FSO

- Handover and tow of FPSO
- Station Keeping
- FPSO Hook-up
- FSO Hook-up
- As-installed survey of mooring lines.

## Phase 3 Installation of Crude Oil Flowline

- Assembly of 1600 m flow line, consisting of 11,8m sections bolted together.
- Handover of flowline to FPSO / FSO.
- As-installed survey of Flowline (from 30m WD).



# Baleine II at a Glance

## Mobilization & preparation

### Project Overview

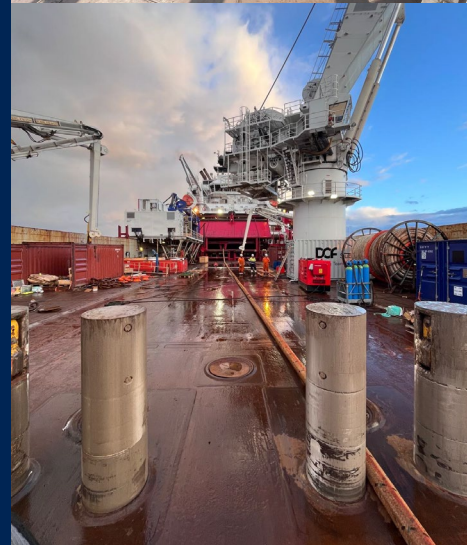
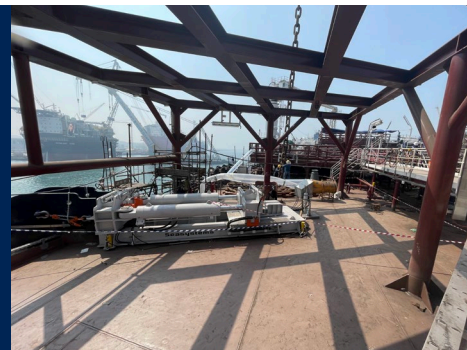
- Mobilization of IV in Sløvåg, Norway
- Testing of flowline assembly equipment at Radøy Gruppen Vetås, Norway
- Team mobilized in Dubai for training and testing of chain pull in system on FSO
- Mobilization of HLV that loaded and transported all chain, fiber and anchors from Europe



### Project Description

#### Operations included:

- Mobilization of working fiber rope and project container
- IV and HLV sailing to Abidjan
- Project team onboard and started loading chain/fiber
- Mobilized crew on FSO for chain handling





# Baleine II at a Glance

## Phase 1 – Mooring Line Pre Lay



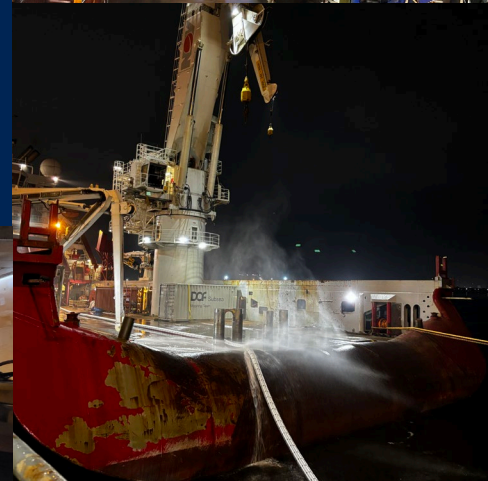
### Project Overview

- Pre-survey of mooring lines laying corridors and anchor installation area
- Pre-installation of mooring system for FPSO
- Pre-installation of mooring system for and FSO
- As-laid survey of mooring lines (performed at the same time as the mooring lines are pre-laid)

### Project Description

#### Operations included:

- Completed 9 wet stored lines for the FPSO and 12 lines for the FSO
- 7 interim mobilizations using MV Annemieke as floating quay
- Total of 6135m chain and 30 234m fibre rope
- 420Te BP





## Phase 1 – Installing of VLA

- 6 cluster sharepin 240t, 2 x 800m PE for tensioning
- 1 cluster sharepin 320t, 3 x 800m PE for tensioning
- No indication onboard for sharepin break
- Uncertainty on the anchor depth and verification on depths



# Baleine II at a Glance

## Phase 2 – Hook up of FPSO and FSO



### Project Overview

- Handover and tow of FPSO
- Station Keeping
- FPSO Hook-up
- FSO Hook-up
- As-installed survey of mooring lines

### Project Description

#### Operations included:

- 3 DOF vessels for station keeping: Skandi Jupiter, Skandi Mercury and Skandi Hera
- FPSO hooked up with 9 lines - 5 days
- FSO hooked up with 12 lines – 9 days



## Phase 3 – Installation of Crude Oil Flowline

### Project Overview

- During planning phase there was many and detailed discussions
- All DOF planned assembly system did work very well.
- Installation aids for hoses & buoys could have been better quality

### Project Description

#### Operations included:

- Assembly of 1600m flow line
- 145 hose sections of 12 m and 228 buoyancy modules mobilised onboard Skansen
- Hose clamp, preparation site, assembly line and hose/bouyancy storage stanchions welded on deck

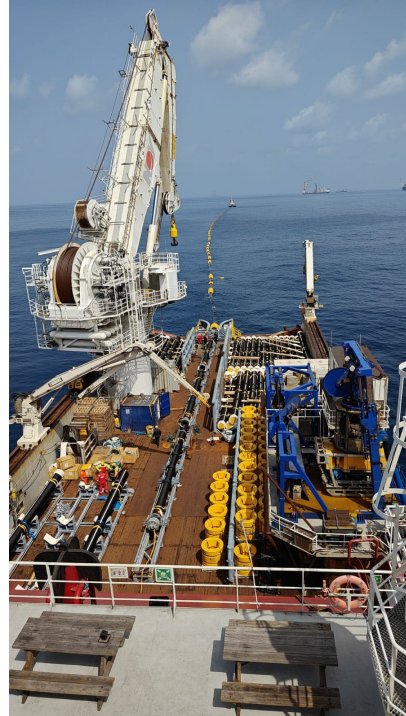
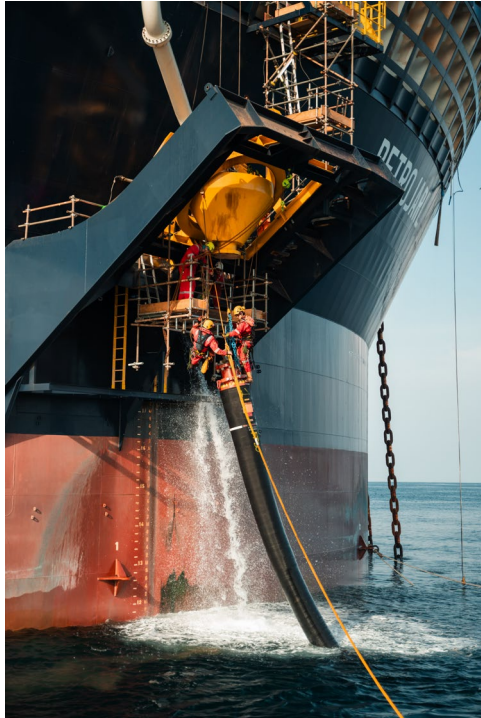




# Baleine II at a Glance

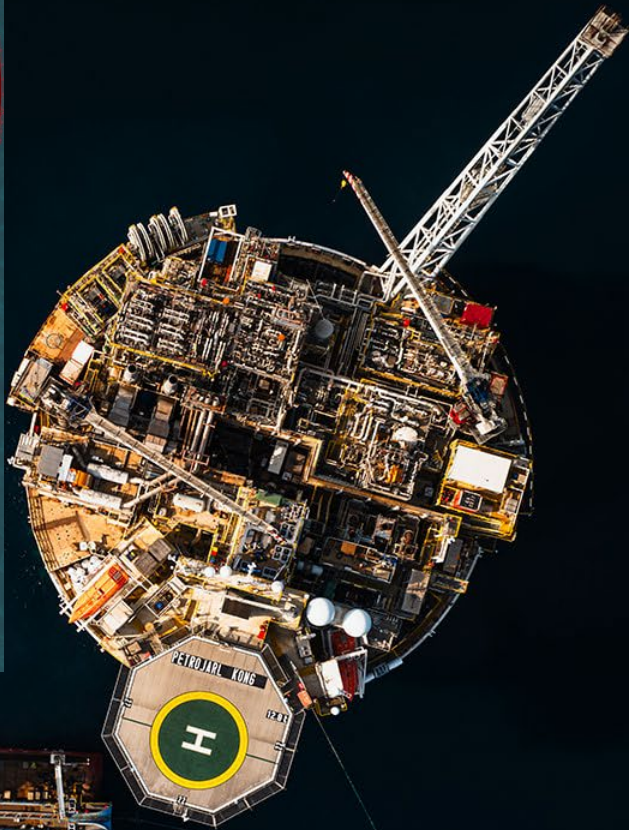
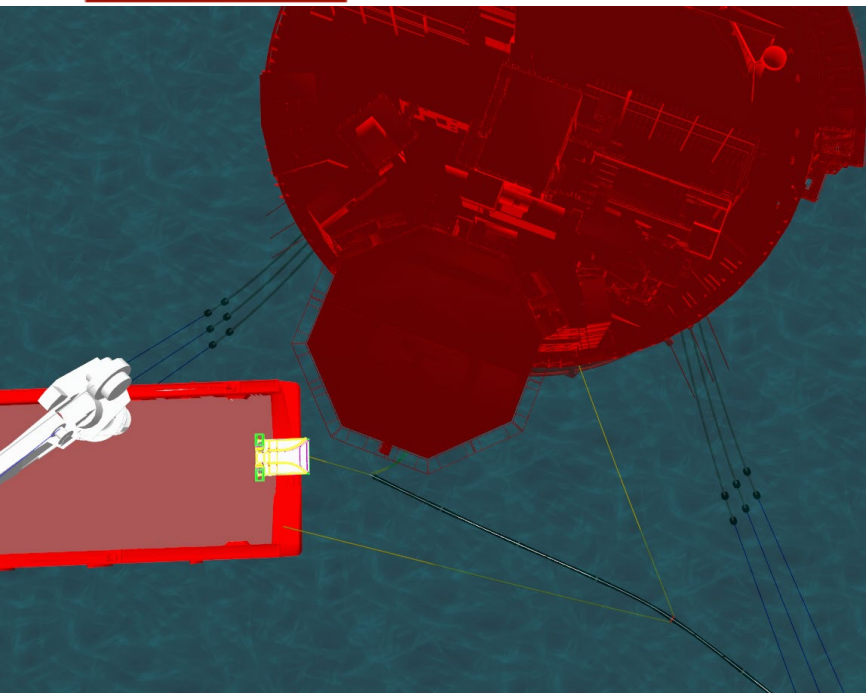


## Phase 3 – Installation of Crude Oil Flowline





# Baleine II at a Glance



# Baleine II at a Glance

## Experience from the project

HSE experience Skandi Skansen, Skandi Hera, Skandi Jupiter & Skandi Mercury

- No personal injuries or serious incidents onboard any of the vessels
- 160 000 hours registries offshore
- Safety observations 458
- TBT 1287
- RA 64





# Baleine II at a Glance

## Experience from the project



- Thanks to good cooperation between DOF and Client the outcome of the project was very successful delivered well within time with no incidents.



# Baleine II at a Glance

## Experience from the project







**Eni** | Baleine phase 2



Presented by  
Rune Nilsen & Astrid Tenden

